



## 3 Acol Crescent

, RUISLIP, HA4 6QP

**£450,000**

FOR SALE BY ONLINE AUCTION  
STARTING BIDS AT £450,000 - TERMS AND CONDITION APPLY

Three bedroom semi-detached house with shared driveway to garage in an excellent location close to excellent schools, South Ruislip Central line and British Rail Station, local shopping including Sainsburys and Asda. Multiplex cinema, the gym, bars and restaurants.

Through lounge / dining room, fitted kitchen, utility room to ground floor, Upstairs are two double bedrooms, large single bedroom and family bathroom.

Benefits from Gas central heating, double glazing, front and rear gardens, shared driveway to garage at rear.

- FOR SALE BY ONLINE AUCTION
- Three bedroom semi-detached house
- Excellent location
- Close to Station and shops
- Outstanding schools
- Front and rear gardens
- Shared driveway to garage
- Gas central heating
- Double glazing

### Viewing

Please contact our Elliott and Company Office on 020 8842 3333 if you wish to arrange a viewing appointment for this property or require further information.

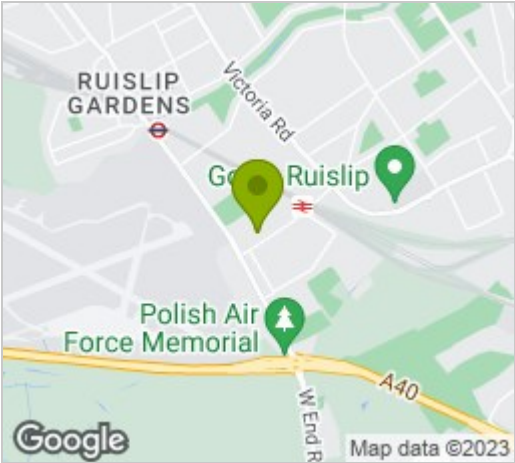




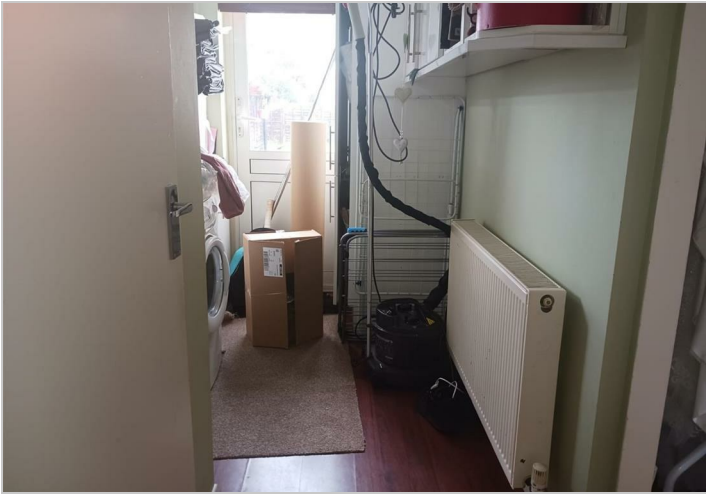
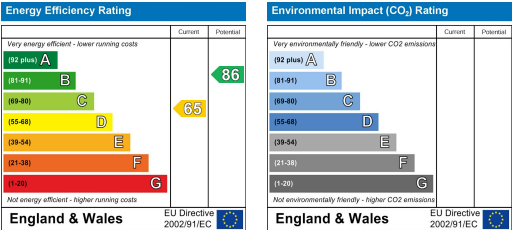
Floor Plan



Area Map



Energy Efficiency Graph



These particulars, whilst believed to be accurate are set out as a general outline only for guidance and do not constitute any part of an offer or contract. Intending purchasers should not rely on them as statements of representation of fact, but must satisfy themselves by inspection or otherwise as to their accuracy. No person in this firms employment has the authority to make or give any representation or warranty in respect of the property.

14 Long Drive, Ruislip, Middlesex, HA4 0HG

020 8842 3333 [lettings@elliottandcompany.co.uk](mailto:lettings@elliottandcompany.co.uk)



[globrix.com](https://www.globrix.com)

[PrimeLocation.com](https://www.PrimeLocation.com)

**Zoopla**  
Smarter property search

**rightmove**